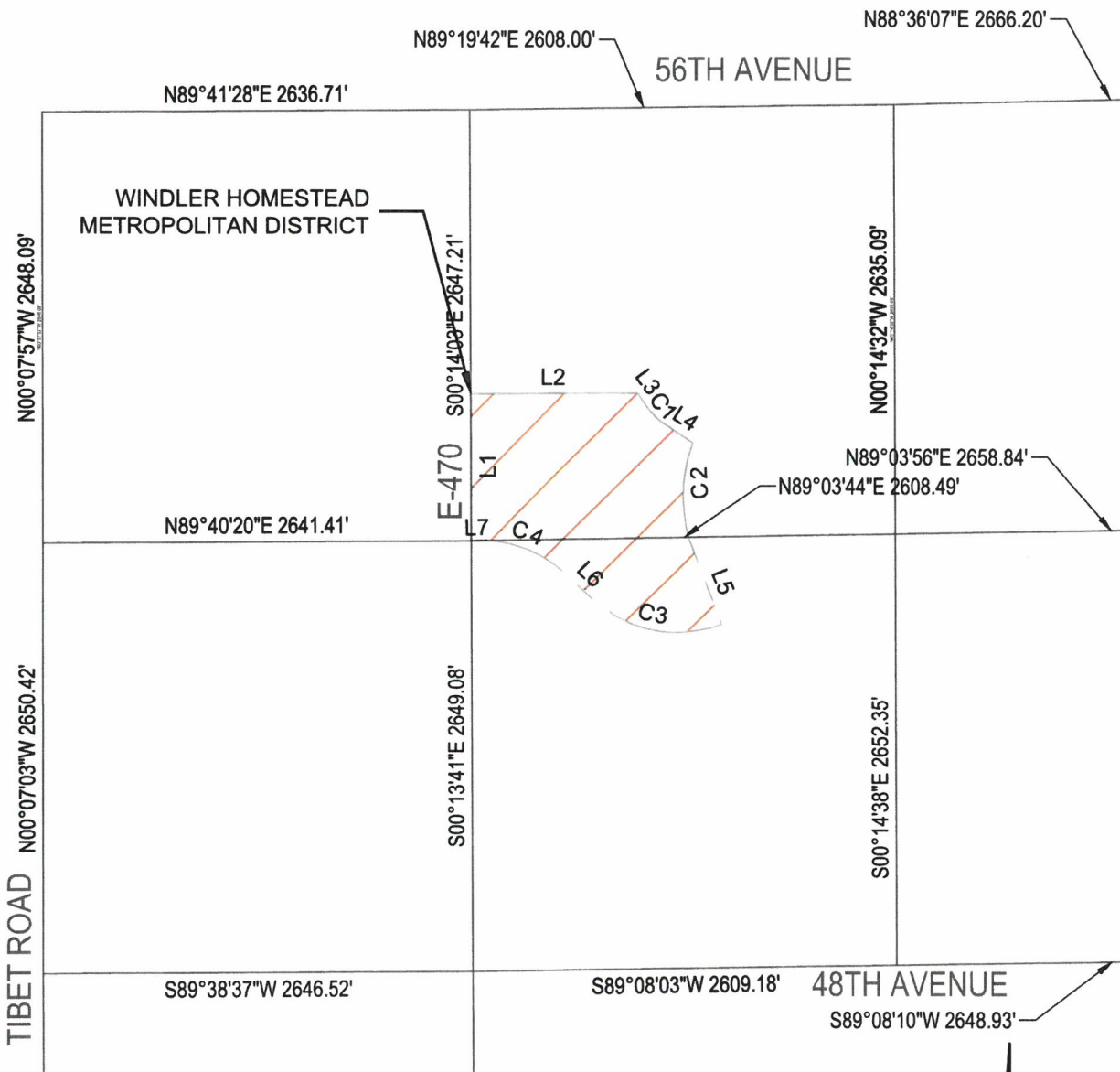


File Location: C:\DEP\Projects\0899-00-Windler Metro Districts\Design\Exhibits\Windler Homestead MD - SERVICE PLAN EXHIBITS.dwg Plot Date: 5/12/2021 4:39 PM Last Saved By: MBERLIN



PARCELS OF LAND SITUATED WITHIN THE
 NORTHEAST, NORTHWEST, SOUTHWEST
 AND SOUTHEAST QUARTER OF SECTION
 18, T3S, R65W, 6TH P.M., CITY OF
 AURORA, ADAMS COUNTY, COLORADO

This illustration does not represent a monumented survey, it is intended only to depict the initial district boundary parcel.



WINDLER HOMESTEAD METROPOLITAN DISTRICT
 BOUNDARY MAP
 EXHIBIT C-1

DATE: 5/4/2021
 SHEET: 1 OF 2